



(April 9, 2012) -- Chartered June 8, 1912, Local 100 of the International Brotherhood of Electrical Workers (IBEW) observes 100 years strong of helping build many major structures in Central California ranging from Friant Dam to the Tulare County Courthouse to the Save Mart Center at Fresno State.

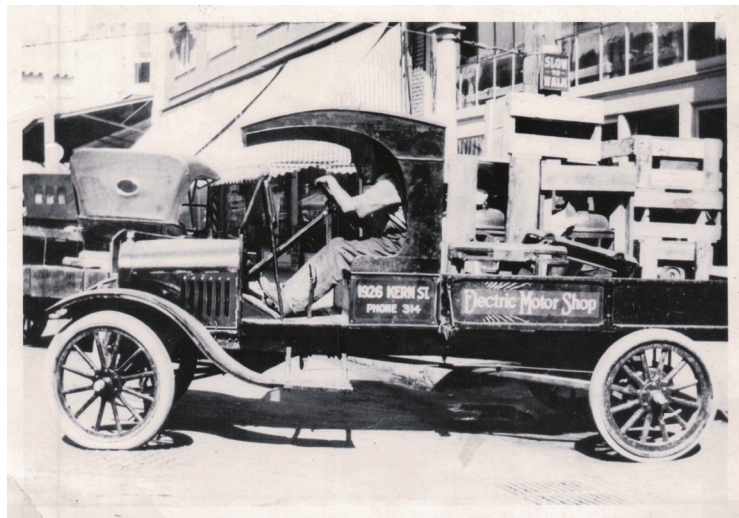
A CENTURY *of* SERVICE

Encompassing a region that includes Fresno, Tulare, Kings and Madera counties, Local 100 was chartered about 20 years following the establishment of the national organization of wiremen and linemen in 1891 who endured early hardship labor conditions as the fledgling electrical industry began the culture-changing campaign of wiring America.

Today, the labor union has grown to international status with locals in Canada and a membership of 750,000 who work in a wide variety of fields, including utilities, construction, telecommunications and government positions. IBEW 100, with the slogan "Lighting up the San Joaquin Valley since 1912," represents approximately 800 well qualified members.

They have been a vital part of Central California's economic backbone and their imprint is found within the infrastructure of many major projects in their four-county region.

In addition to the dam, Tulare courts and Save Mart Center, IBEW projects valleywide include the Helms Power Plant, Fresno County Juvenile Justice Center, the Del Webb Building (now Fresno County Plaza), Fresno City Hall, St. John's Cathedral, the Fresno Grizzlies Chukchansi Park, Lemoore Naval Air Station, Corcoran and Avenal State Prisons, Kaweah Delta Hospital, Chukchansi Gold Resort and Casino, Mission Oak High School, GWF Co-generation Plant, Pixley Ethanol Plant, Granite Hills High School (Porterville) and Mission Oak High School (Tulare) among many others.



Electric Motor Shop, 1913.

One of the union's strengths is its training programs for pre-apprentices, apprentices and journeymen that represent a commitment to qualifying highly skilled and safety conscious workers for the industry, said Business Manager Kevin Cole.

The union works with the National Electrical Contractors Association to provide training to more than 42,000 apprentices a year for jobs in the industrial, commercial, residential and telecommunications sectors utilizing apprenticeship programs through the National Joint Apprenticeship and Training Committee (NJATC), offered at more than 300 locations throughout the United States.



Camp 73 Tunnel at Big Creek, Nov. 17, 1925.

In addition, locally a new pre-apprentice endeavor is the Fresno County Jumpstart Program designed to prepare welfare-to-work clients for a career in the building trades.

“This commitment to training, professionalism and safety instills a sense of pride in the work our members do and is part of the IBEW’s legacy that has helped build the nation and our region,” Cole said.

IBEW members have been at the forefront of technological developments throughout its history including building solar power systems and energy efficient projects for companies like PGE and Schneider Electric.

Local 100 President Stefan Davis notes that in addition to IBEW Local 100 members’ significant role in the region’s development, they have given back to their communities through civic engagement such as contributions to United Way and the Community Food Bank. Members also serve on various community non-profit boards and volunteer for youth sports activities.

Local 100’s “A Century of Service” centennial celebration will be **5:30 p.m. Friday, June 8**, at the Fresno Convention and Entertainment Center with International President Edwin D. Hill from Washington D.C. headlining several national and statewide dignitaries.

(See the IBEW 100 website for more information about the celebration or call 559.485.1320).

Rev. 04/14/12

